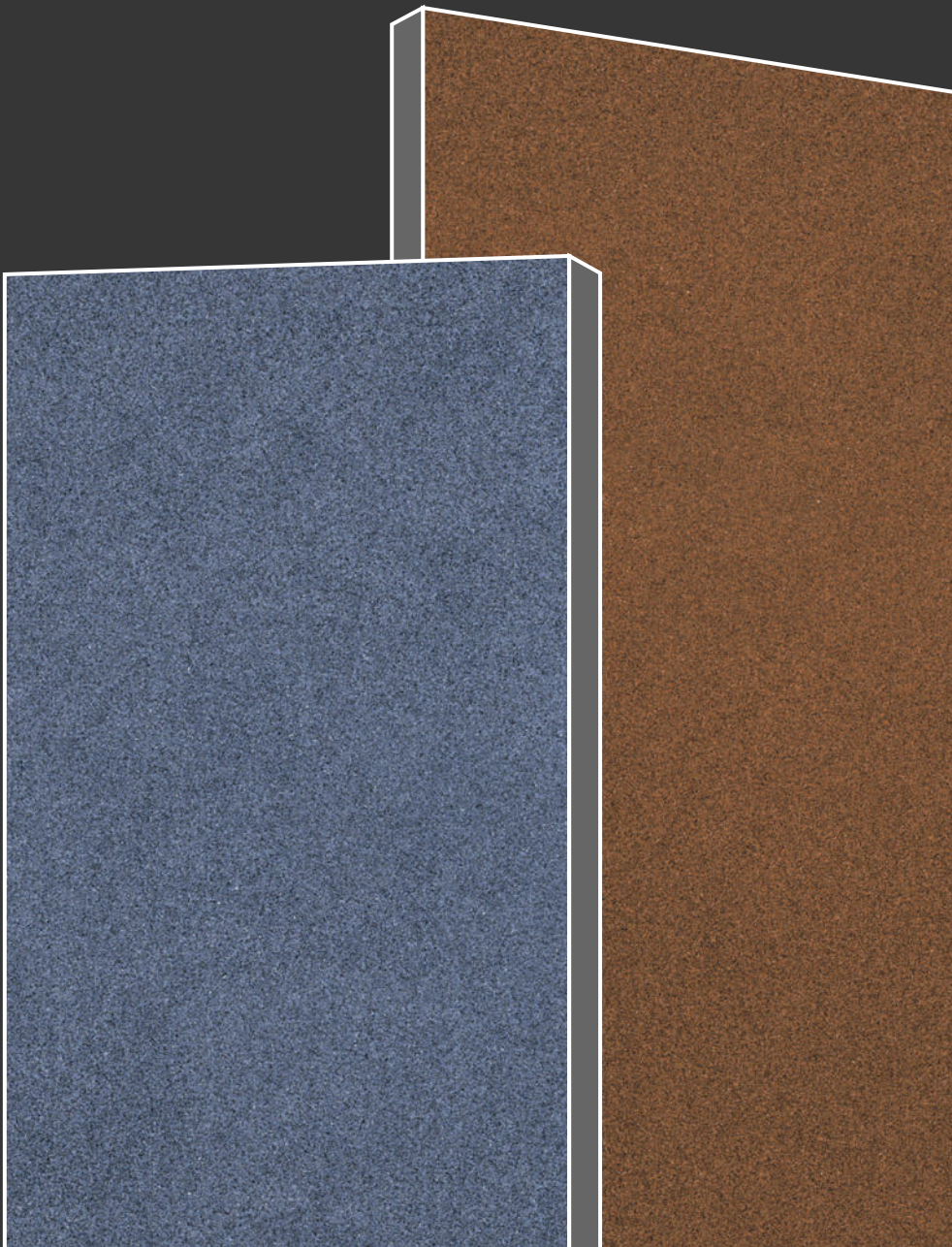


**POLLENS**<sup>®</sup>  
— GRANITO —

**UNIQSTONE**  
Contemporary design





## BRAND INTRODUCTION

# indian heart, worldwide vision

From its headquarters in Morbi, it designs, develops, manufactures and distributes ceramic tiles for two commercial sizes: 60x120cm & 80x160cm. Pollens Granito owns production plants in Morbi with a capacity of over 9 million square meters per year. It produces more than 4,500 Designs that are distributed worldwide through sales offices and warehouses located in Italy, United States, Russia, Germany, India and Hong Kong.

Pollens Granito has a logistics organization geared to respond immediately to the needs of the global market; its skilled team has a market oriented approach, it provides tailor made solutions from design to tiles installation.

Pollens Granito operates in more than 70 countries with large points of sale. In some strategic areas, its international strength is underlined by specific divisions. In order to promptly fulfil the orders that arrive from 4 different continents.



# UNIQSTONE

Contemporary design

600x1200mm

Glossy Surface

## JUST THE RIGHT AMOUNT OF SOPHISTICATED ELEGANCE.

Within this trend, the new UNISTONE series brings a plus of style to spaces with its sober yet imposing design, a collection of great versatility suitable for all types of surfaces and projects, both public and private.



**UNIQSTONE**  
Contemporary design



**Infinite range of colored mixes and fragments.**

One-of-a-kind production facilities and know-how permit preparation and combination of the extraordinary variety of colored mixes and fragments that go into every **UNIQSTONE**. Only natural raw materials, **UNIQSTONE** are made exclusively from prestigious minerals and clays, extracted and worked using sustainable methods. Earth, water and fire: no solvents, resins or chemical additives. A material that is homogeneous throughout. A solid material which makes no distinction between outer surface and core, made with interpenetrating mixes of different colors.



Hygienic and suitable for contact with food



Resistant to chemicals, acids bases, and solvents



Easy to clean



Scratch proof and abrasion-resistant



UV-resistant



Frostproof



Resistant to heat and high temperatures



Guaranteed flatness and stability over time



Impact Resistant & More Durable



Resistant to mould, mildew, and fungus



Stainproof



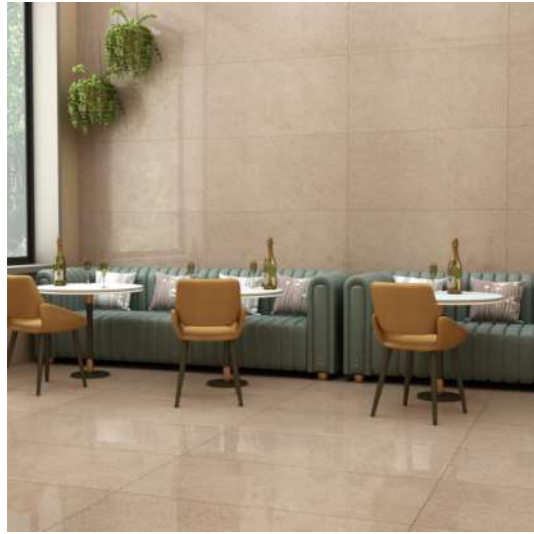
Waterproof

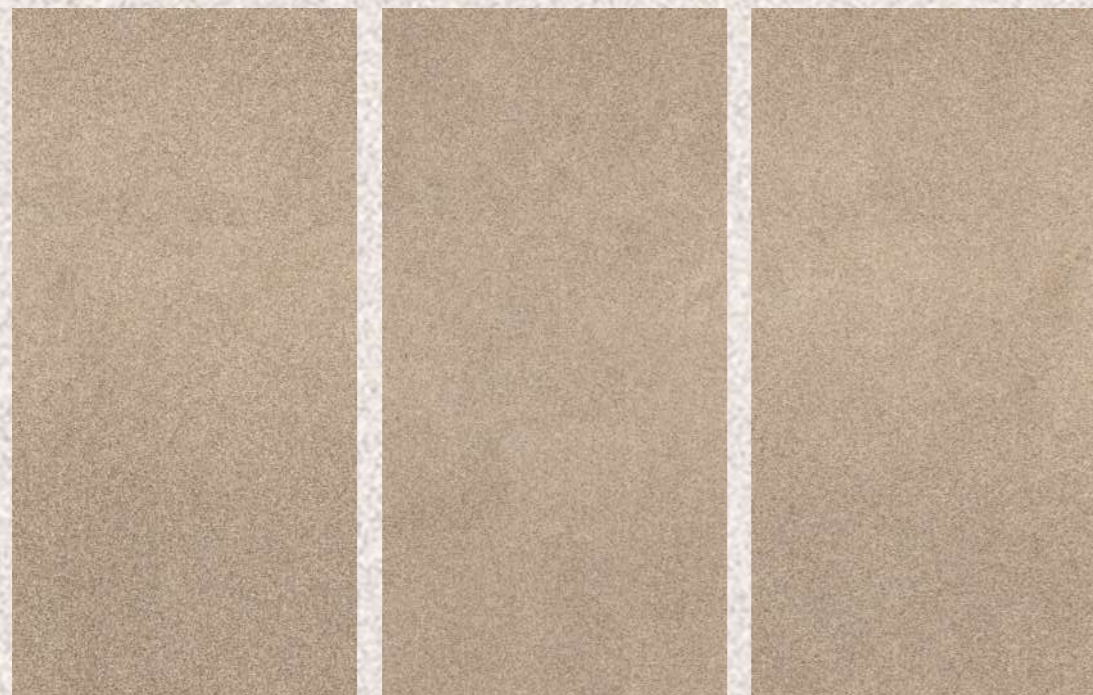
# VERSATILITY AND STRENGTH ARE THE TWO MAIN CHARACTERISTICS OF THE UNIQSTONE.



Unrestricted, easy installation  
in any context, residential or commercial.  
UNIQSTONE are easy to install in a variety of ways, from  
the conventional glue method to laying directly on grass  
and gravel, or raised installation on pedestals.

# USAGES POSSIBILITIES



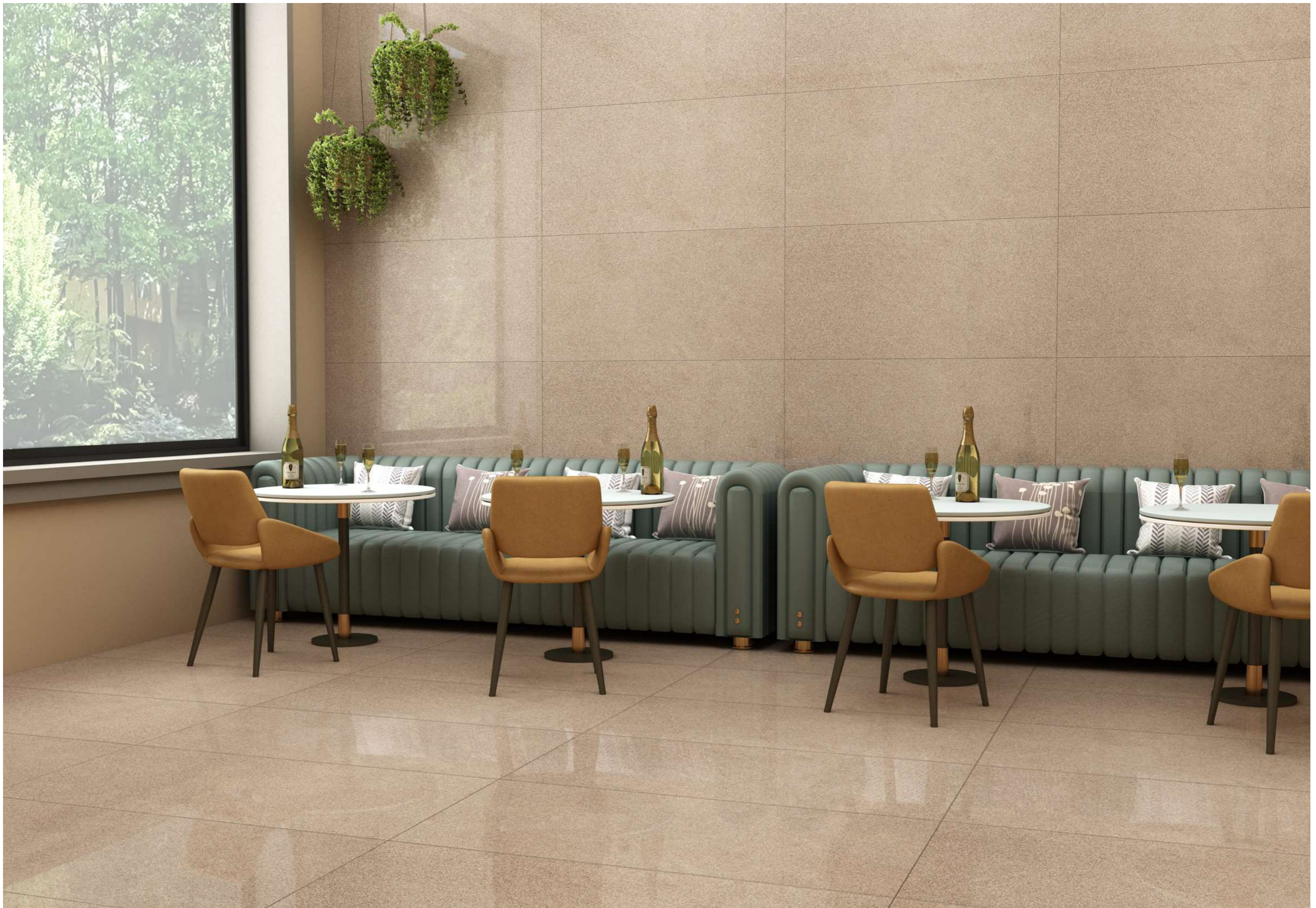


Product Name :  
**Almond**

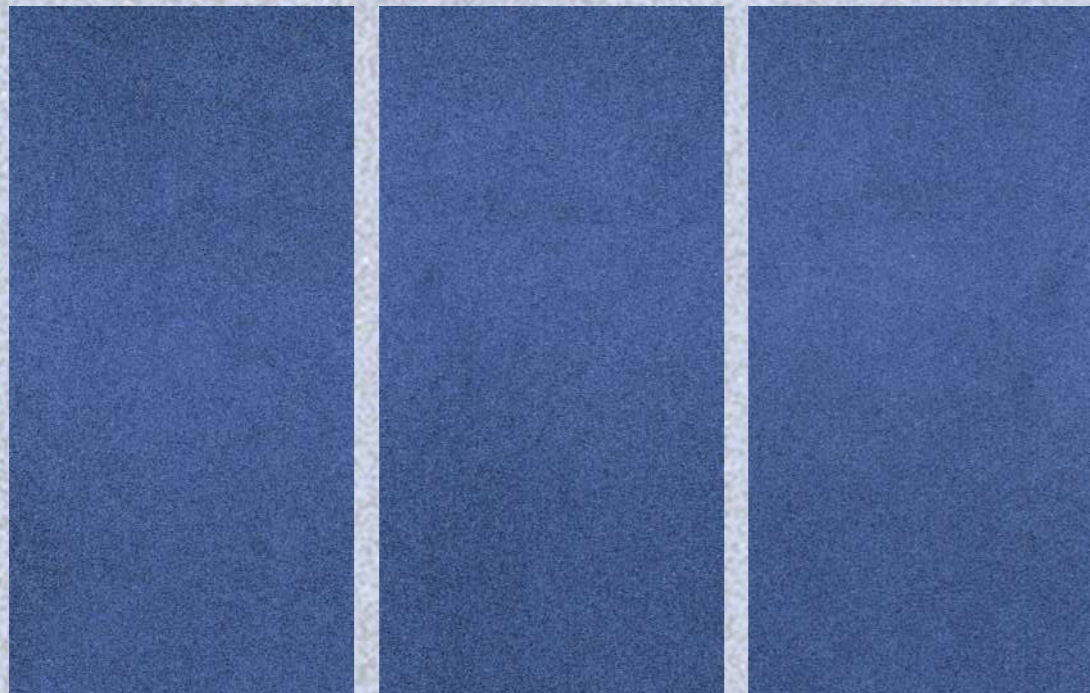
Product Size :  
**600x1200mm**  
**2'x4'**

Product Surface :  
**Polished Surface**









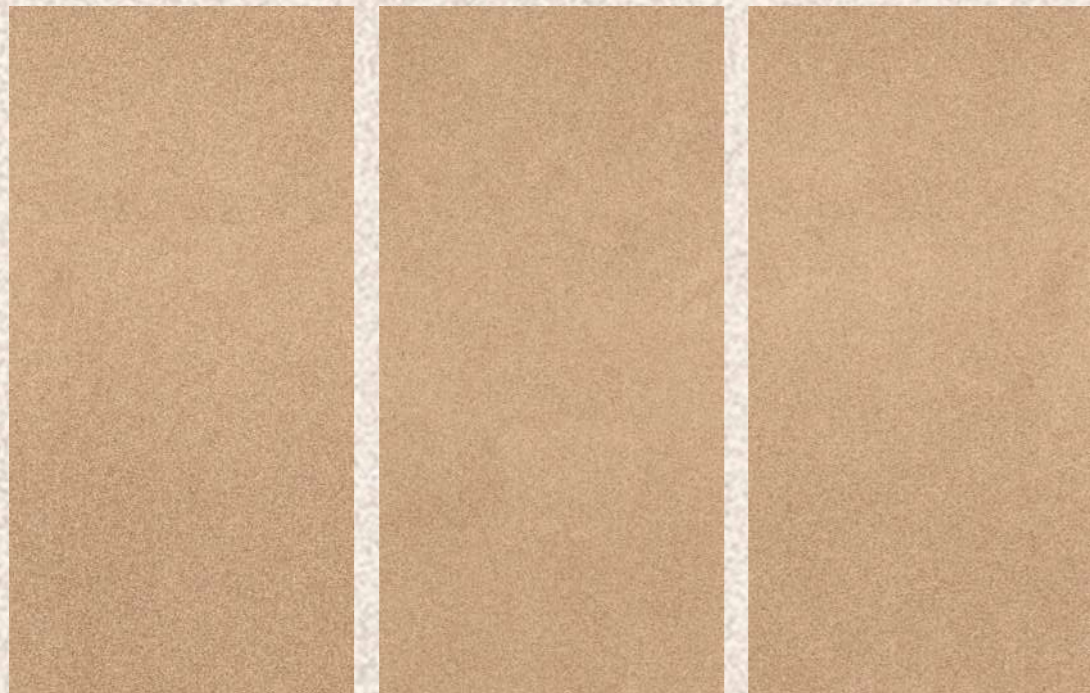
Product Name :  
**Azure**

Product Size :  
**600x1200mm**  
**2'x4'**

Product Surface :  
**Polished Surface**







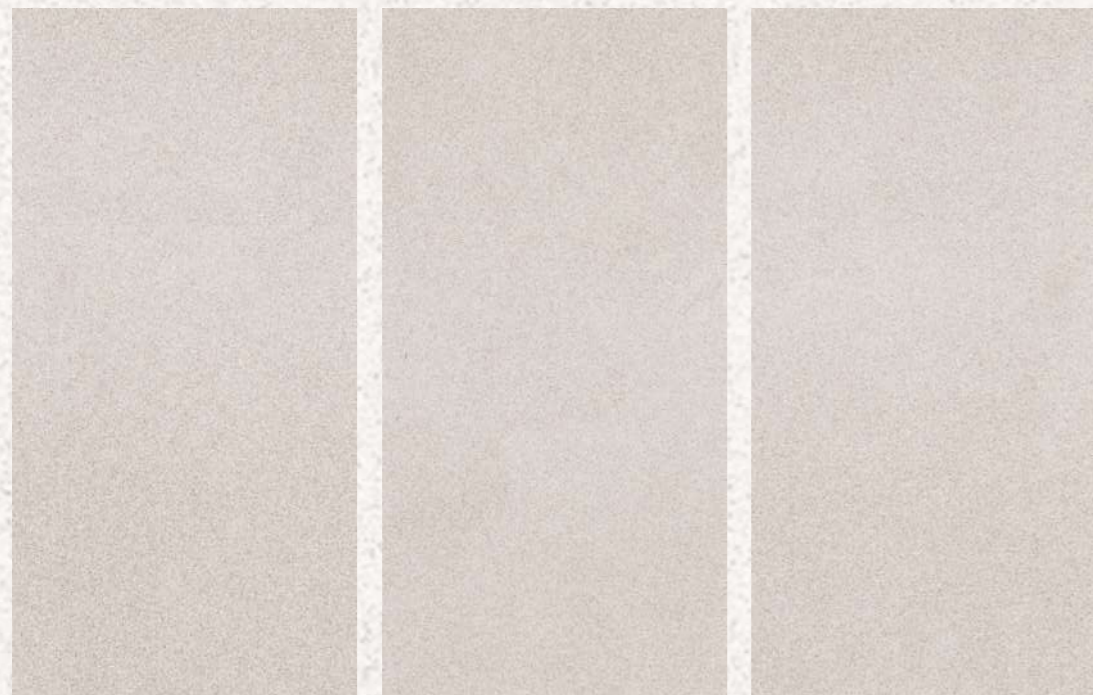
Product Name :  
**Beige**

Product Size :  
**600x1200mm**  
**2'x4'**

Product Surface :  
**Polished Surface**







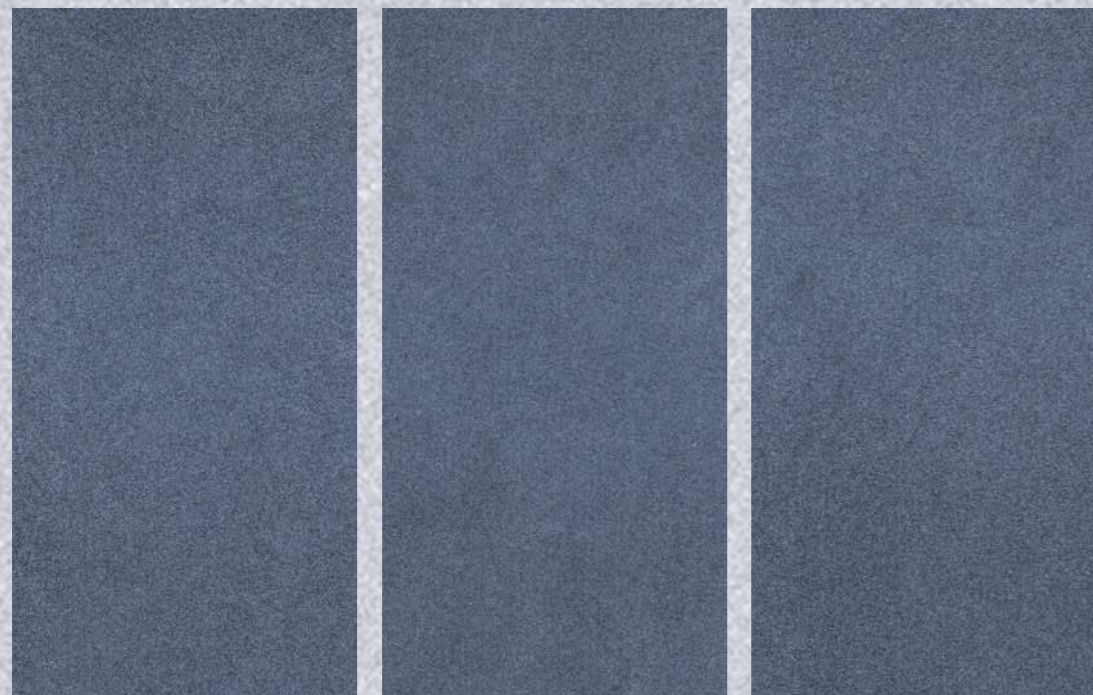
Product Name :  
**Bianco**

Product Size :  
**600x1200mm**  
**2'x4'**

Product Surface :  
**Polished Surface**







Product Name :  
**Blue**

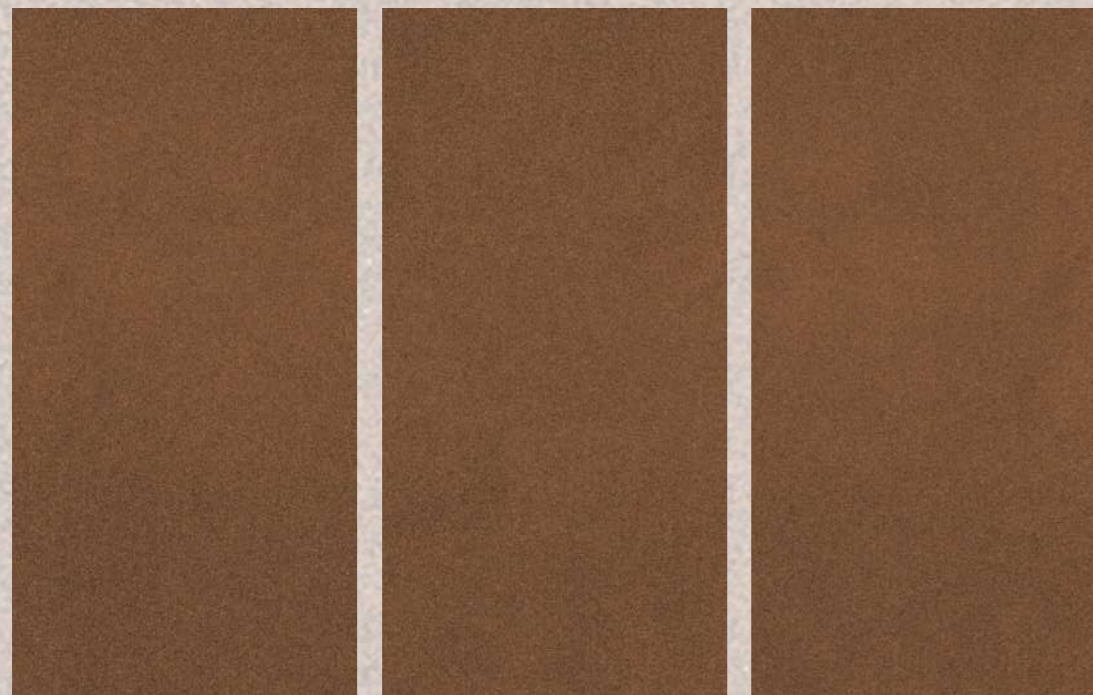
Product Size :  
**600x1200mm**  
**2'x4'**

Product Surface :  
**Polished Surface**









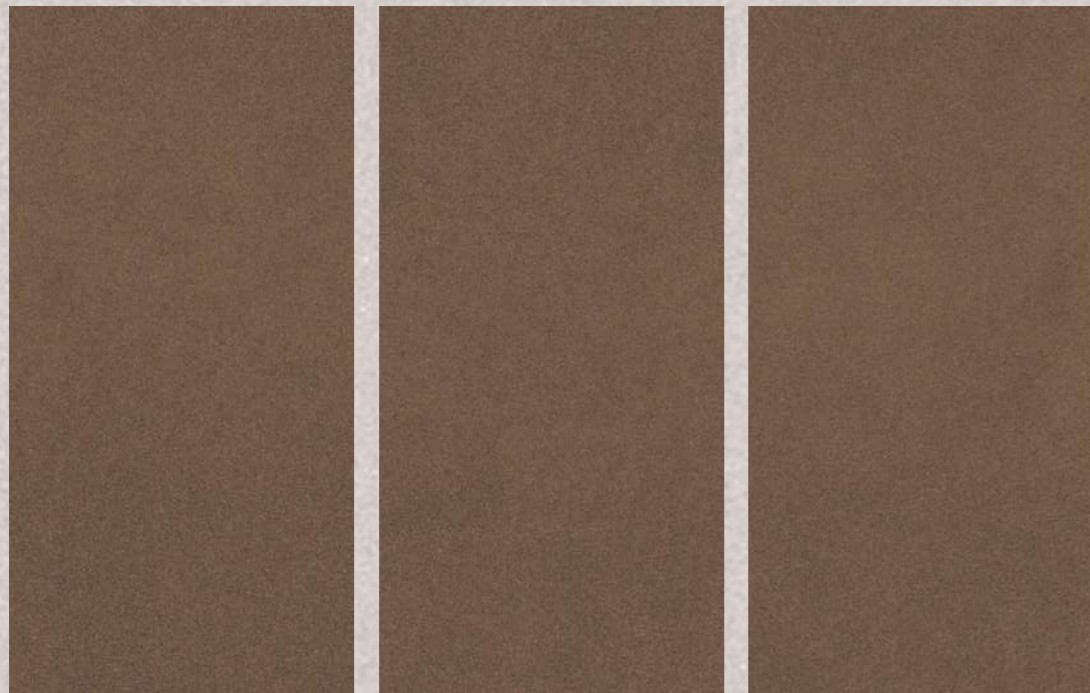
Product Name :  
**Brown**

Product Size :  
**600x1200mm**  
**2'x4'**

Product Surface :  
**Polished Surface**







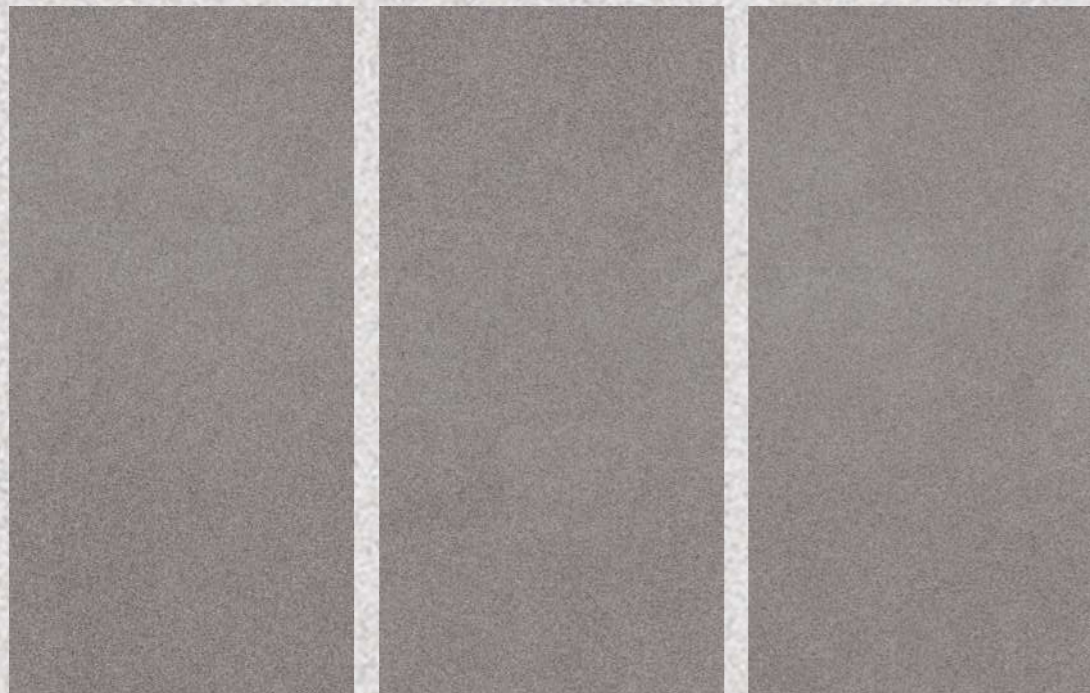
Product Name :  
**Coffee**

Product Size :  
**600x1200mm**  
**2'x4'**

Product Surface :  
**Polished Surface**







Product Name :

**Grey**

Product Size :

**600x1200mm**

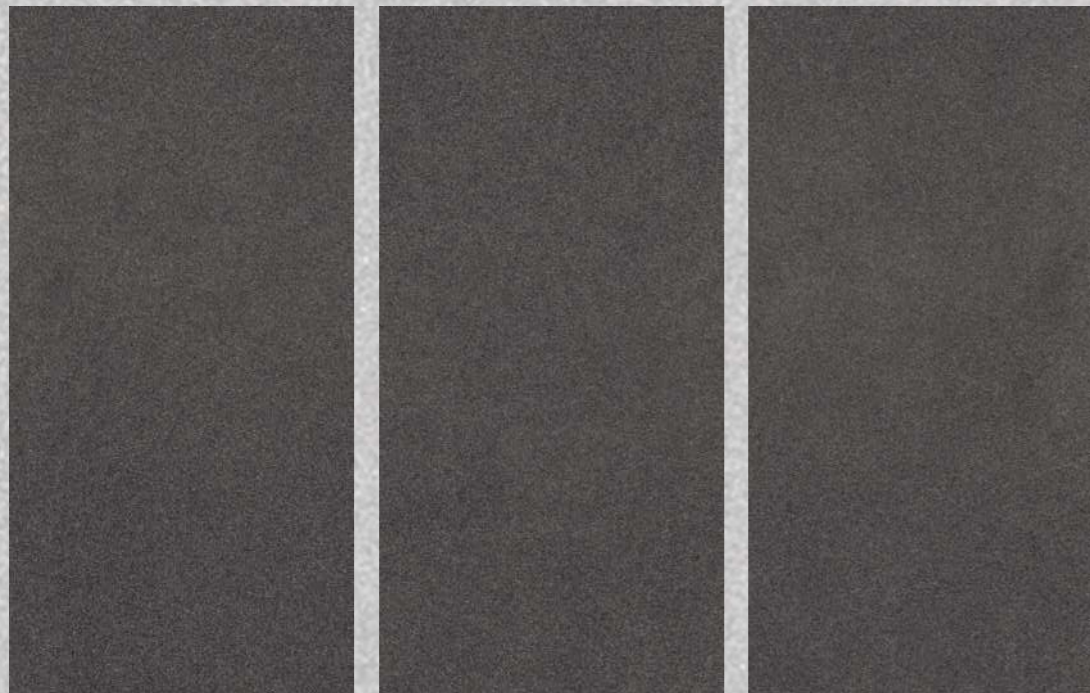
**2'x4'**

Product Surface :

**Polished Surface**







Product Name :  
**Nero**

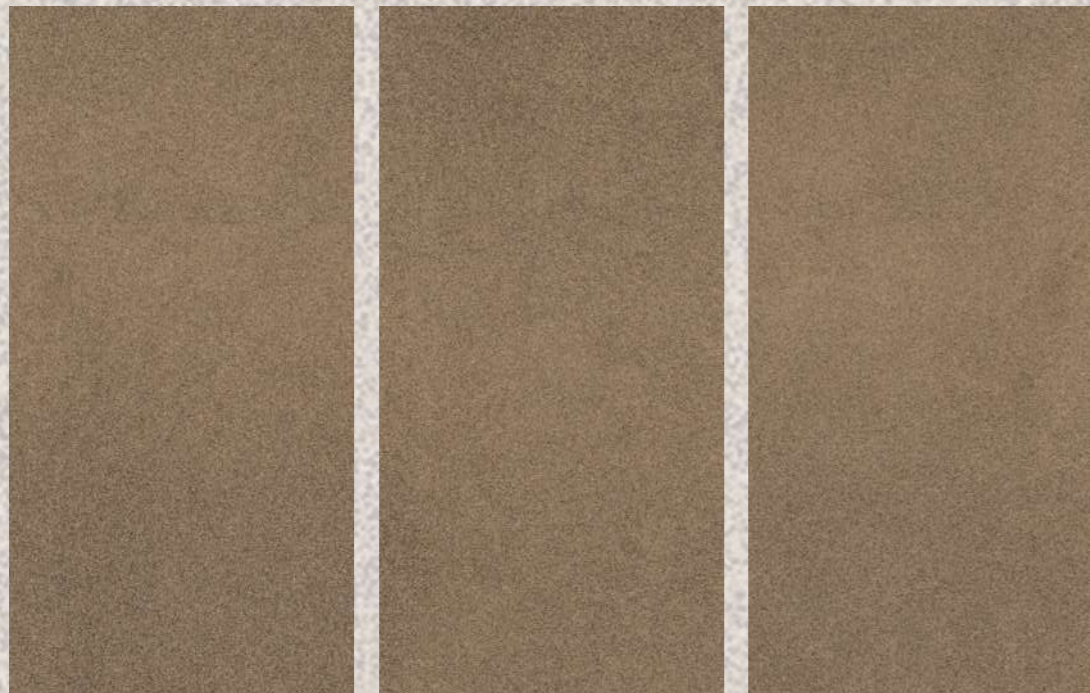
Product Size :  
**600x1200mm**  
**2'x4'**

Product Surface :  
**Polished Surface**









Product Name :

**Pista**

Product Size :

**600x1200mm**

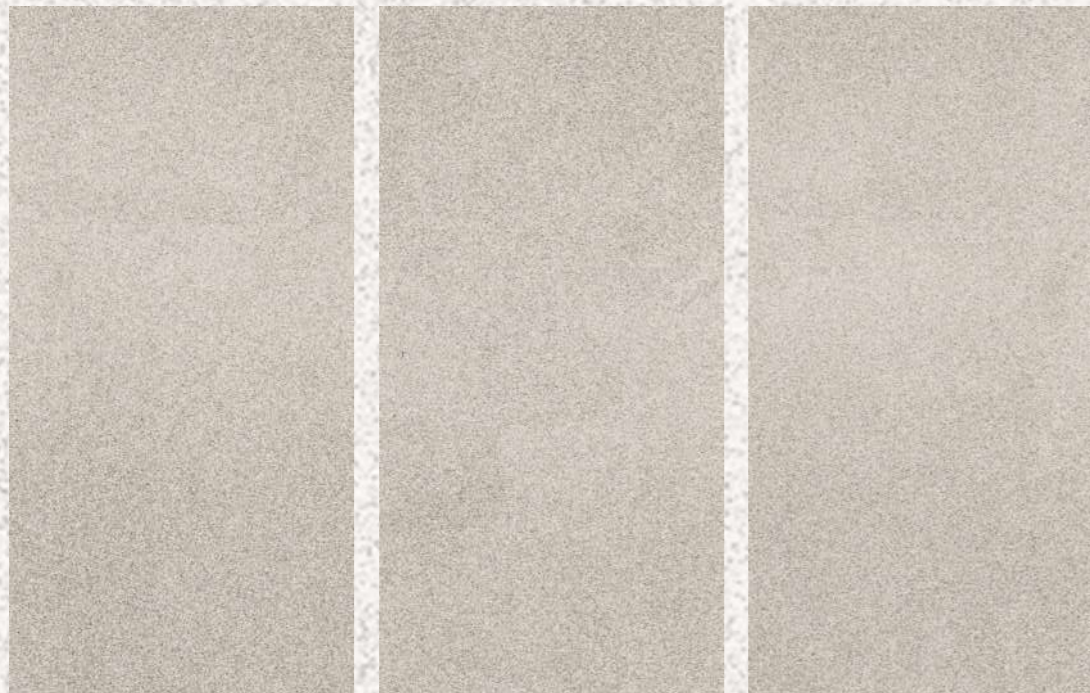
**2'x4'**

Product Surface :

**Polished Surface**







Product Name :  
**White**

Product Size :  
**600x1200mm**  
**2'x4'**

Product Surface :  
**Polished Surface**





**POLLENS**<sup>®</sup>  
— GRANITO —

**Address :**

Survay No. 578P,  
Opp. Viratnagar, jetpar Road,  
At. Sapar - 363630, Morbi (Guj.) India

**Email :**

[info@pollensgranito.com](mailto:info@pollensgranito.com)

**Website :**

[www.pollensgranito.com](http://www.pollensgranito.com)